



ओ३म्

SHANTI DEVI ARYA MAHILA COLLEGE

Dinanagar (Distt. Gurdaspur)-143531

Affiliated to GNDU, Amritsar | A Multi-Faculty Post-Graduate Women College

Re-Accredited by NAAC with 'A' Grade

College with Potential for Excellence Status by UGC, Green Champion Award by MGNCRE (Govt. of India)

Ref.No. 6968.A.SD/GEN

Dated.30-07-2024



7.1.2 The Institution has facilities and Initiative for:

2. Management of the various types of Degradable and Non Degradable Waste



The Institutional Efforts Done for Biodegradable and Non Degradable Waste Management

Vermicompositing

It is also done in the campus and fertilizer made by worms is sold out to staff and also used in college lawns.

Solid waste management

Segregation of the solid waste is done on daily basis. Specifically blue & green dustbins are installed in all Corridors in the campus. On the outer wall of the college a Message for segregation of waste has been painted by students of fine arts department. Non-biodegradable waste is mostly disposed in the dump of the municipal corporation. The solid biodegradable waste from hostel mess, canteen and lawns is collected and dumped in the pit for decomposing it to make bio-fertilizer for plants.

Liquid waste management

Liquid waste from washrooms, bathrooms, kitchen and mess is collected in the sewage tank. Water of RO system, and AC's is collected for batteries and for watering plants.

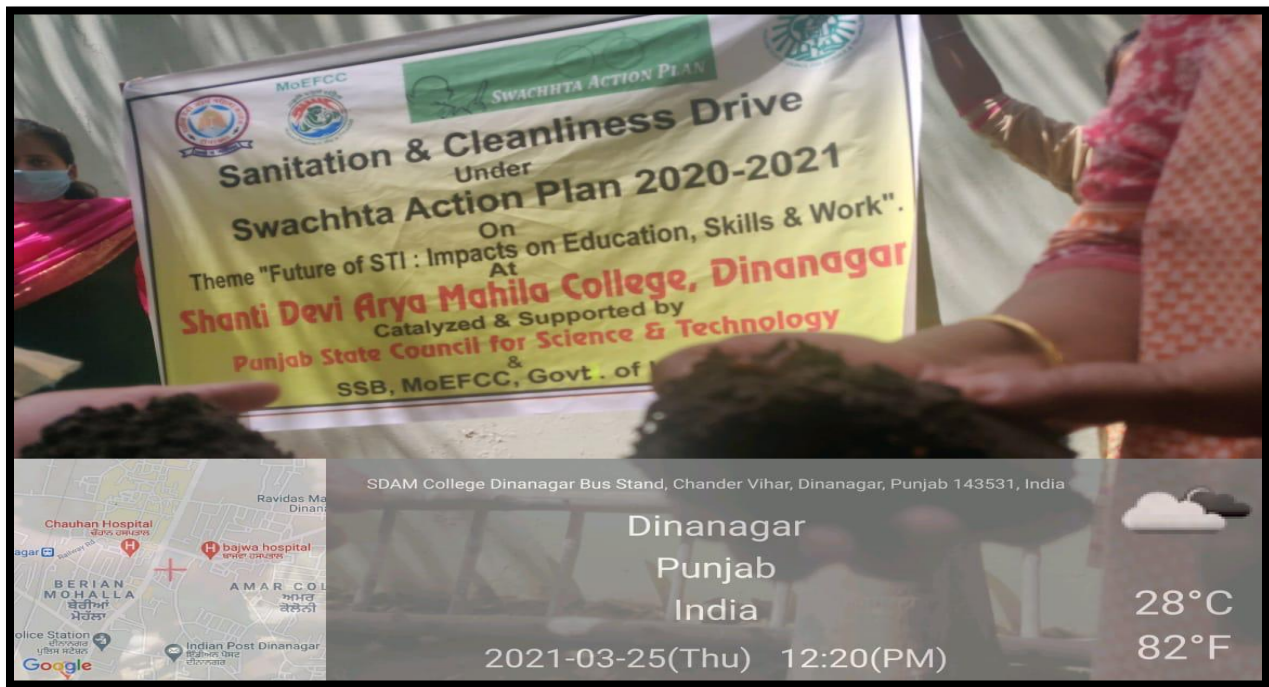
E-waste management

The college has minimum e-waste. The parts of old computers and electronic items are used for repairing and replacement of PCs. Some waste is sold to authorized vendors for recycling.

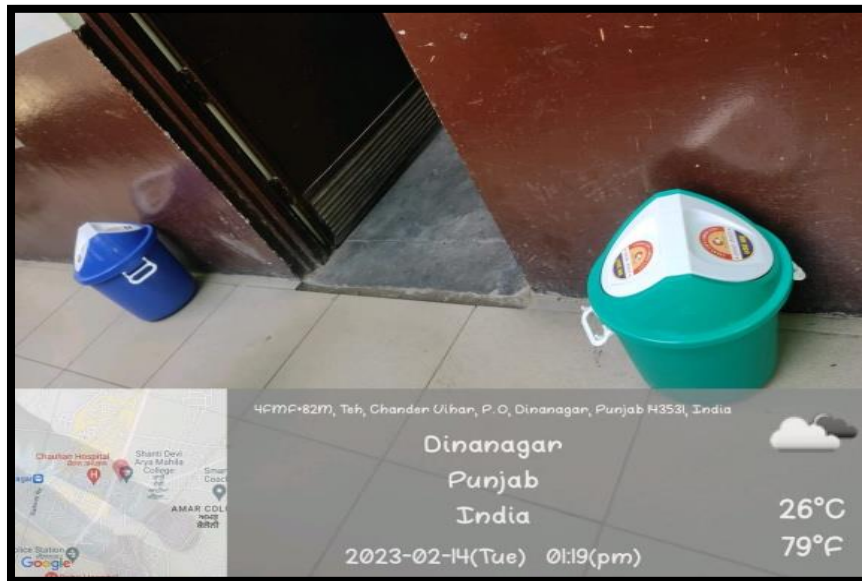
Vermi Composting Pit & Compost Pit for disposing Bio - Degradable



Vermicompost Pit has been managed by the ECO Club



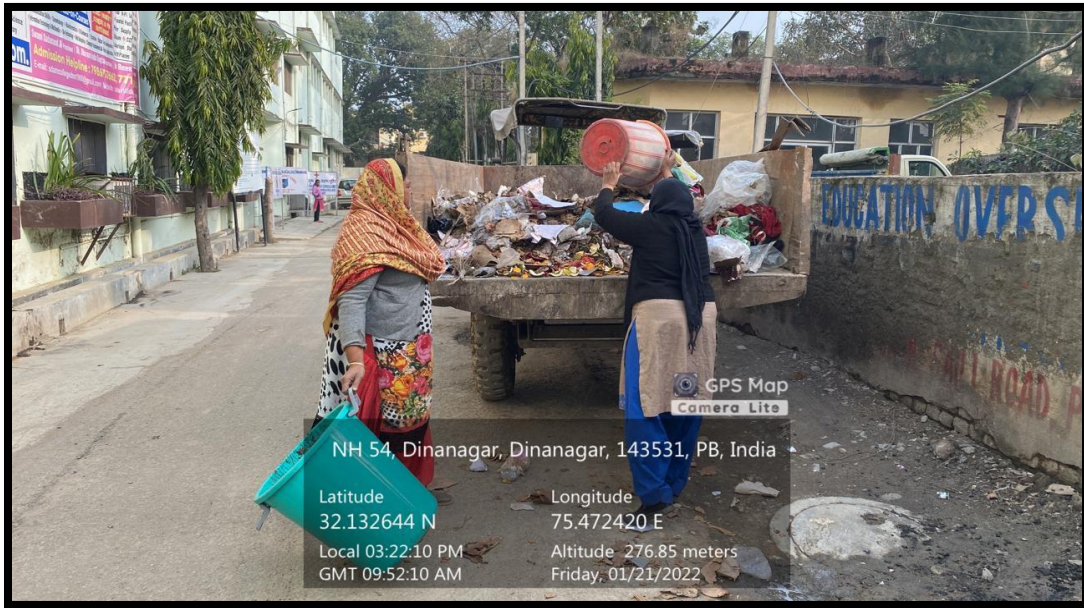
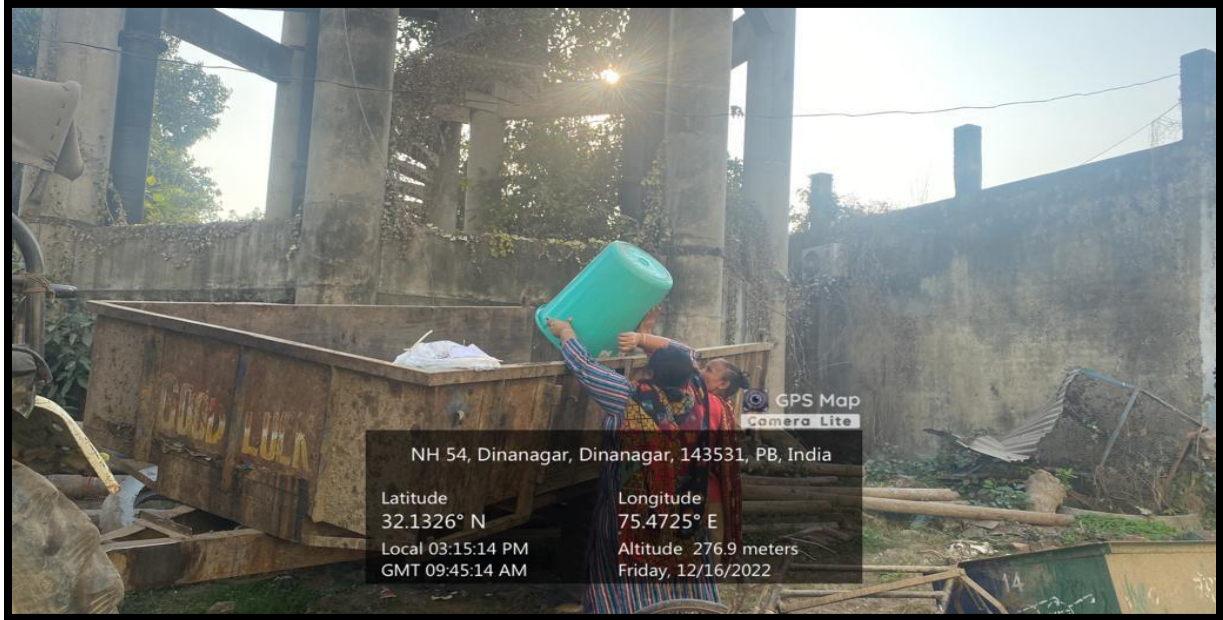
Different coloured Dustbins have been provided in each corner and classrooms of the college campus to ensure proper segregation of the waste



Biodegradable and Non Degradable Waste Segregation is done and waste is disposed by the sweepers in the van of municipal corporation



Biodegradable and Non Degradable Waste Segregation is done and waste is disposed by the sweepers in the van of municipal corporation



Non - Biodegradable Solid Waste like broken furniture made up of iron and plastic ,Junk material is sold to authorized vendors

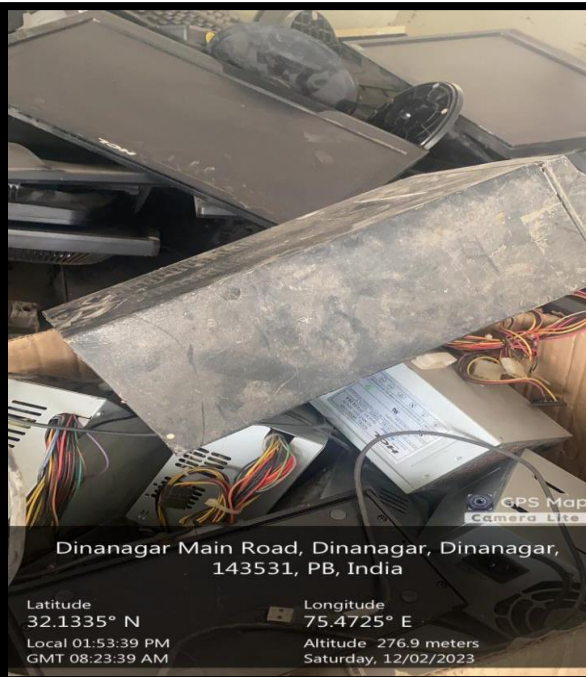


E- Waste Management

The parts of old computers and electronic items are used for repairing and replacement of PCs wherever necessary. Some leftover waste is sold to authorized vendors for recycling.



E- Waste being sold to authorized vendor



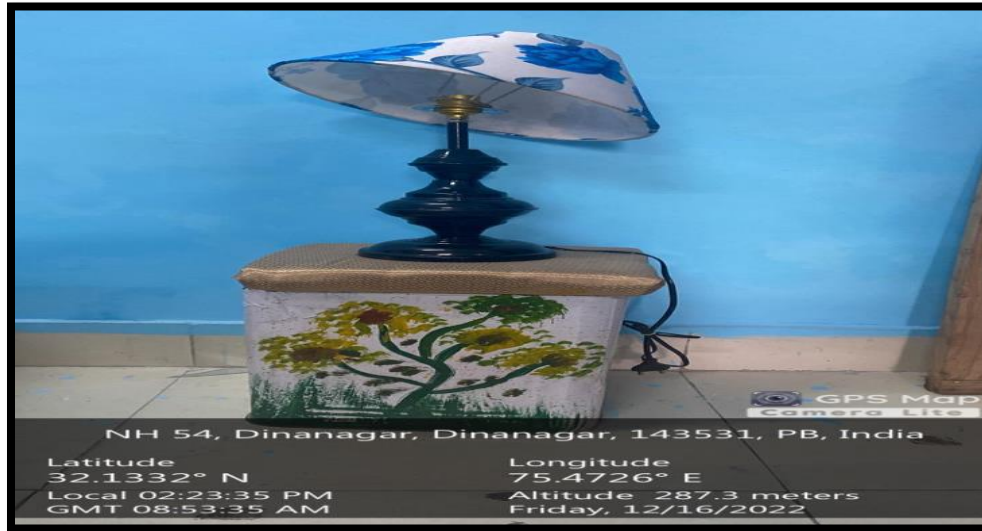
Institution believes in 4 R'S to save environment : REDUCE, REUSE, RECYCLE & REFUSE

Reuse of Waste Material is done by Fashion Designing and Home Science Departments organizing workshops of Best Out Of Use

Old Plastic & Steel Plates painted and displayed on the walls



Old Can used as a side table for lamp and waste tires are used for making center tables



Flowerpots have been made by using Plastic bottles




Principal
Shanti Devi Arya Mahila College
Dinanagar (GSP.)